

CONNECTIS® Inverter



GRIDFIT 2500

From sun to grid...

TOTAL ENERGIE's GRIDFIT 2500 converts electrical energy coming from the PV modules into alternating current, suited for grid connexion. Using the direct injection technology, this grid-connexion inverter is designed to operate with our standard **CONNECTIS®** systems.

The technology used in these devices result in great performance throughout the available solar power range.

The modular design provides power solutions from a few kilowatts to several hundred kilowatts.



DESIGN FEATURES

- Wide input range with automatic adaptation to the solar generator; no manual configuration is necessary.
- Highly precise search for the maximum power operating point of the PV generator (MPPT), even in overcast weather.
- Stable operation during rapid solar irradiance changes (intermittent clouds).
- Sinusoidal current independent of the network current curve shape.
- Grid synchronisation thanks to a perfect internal sinusoidal reference.
- Energetic conversion efficiency > 93,5%.

MONITORING (optional)

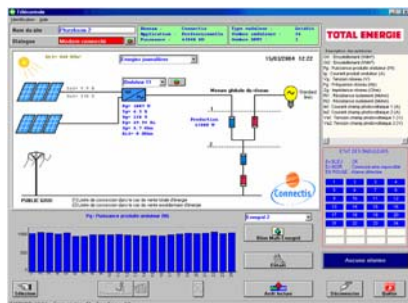
TOTAL ENERGIE enables you to control and supervise the energy production of your photovoltaic station thanks to our fully adapted product range.

• ENERGRID

This data logger allows you to control consumption and production measures, inverter data and working order, to memorise alerts, to consult temperatures and sun radiation.

• GRIDSOFT

PC interface with excellent read-out possibilities to run and manage PV systems.



• QUALISUN

Consult, operate and manage PV systems through our dedicated internet page :

www.qualisun.com

BENEFITS

- IP 65 housing.
- Auto-detect RS232/RS485.
- In/Out galvanic insulation through high frequency transformer.
- 2 standard models available :
 - Inverter with ENS
 - Inverter without ENS
- Low weight : only 14 kg.
- Waterproof connectors : input DC, output AC and RS232/485.

- Integrated LCD display.



- Ergonomic and simple keyboard ensures direct access to inverter key information.

MEASURES

Current	Output power (AC) Output voltage (AC) Output current (AC) Grid frequency (AC) Grid impedance (AC) PV voltage (DC) PV current (DC) Time Date
Daily	Energy output (AC) Maximum power output (AC) Maximum grid voltage (AC) Minimum grid voltage Maximum AC current (AC) Maximum grid frequency (AC) Minimum grid frequency (AC) Maximum PV voltage (DC) Maximum PV current (DC) Operating time
Daily Weekly Monthly Annual Total	Energy output (AC) Operating time

Note: AC = alternating current

DC = direct current

28/02/2005

Onduleur CONNECTIS®



GRIDFIT 2500

Input values

Nominal power (DC)	2750 W
Maximum acceptable peak power (DC)	3430 Wc (*)
MPPT voltage range (**) (DC)	125 V- 350 V
Minimum voltage (DC)	150 V
Maximum voltage (DC)	400 V
Current range (DC)	0 to 18 A

Output values

Nominal power (AC)	2500 W
Nominal voltage (AC)	230 V, -15%, + 10%
Voltage range (AC)	196V to 253V
Other possibilities	programmable from -14% up to +10%
Nominal current (AC)	10,9 A
Current range (AC)	0 to 12,8 A
Frequency	50 Hz ; ±0,4%
Frequency range	49,8Hz to 50,2Hz
Other possibilities	programmable from 48Hz up to 52Hz
Power factor	~1
Harmonic distortion rate	< 3%
Maximum efficiency	> 93,5%
Maximum efficiency (European standards)	> 90,0%
Efficiency at 20% of nominal power	>90%

General data

Connexion to modules (DC)	4 TYCO
Connexion to grid (AC)	Easy plug-in/plug-out connectors
Housing	Aluminium
Convection cooling	Yes
Weight	14 kg
Environmental temperature	-25° to +80°C
Operating environmental temperature	-25° à +60°C
Relative humidity	0-95%
Protection class	IP 65

Dimensions

Length	443 mm
Width	335 mm
Height	150 mm

Communication

Indicators	3 LEDs for status information and error messages
Display	Liquid Cristal Display
External communication	RS232 or RS485 with auto detection
Data logger (optionnal)	ENERGRID
Monitoring softwares (optionnal)	GRIDSOFT ; QUALISUN

Standards

Inverter with ENS (disconnectable according to the country)	Code : 63641
Inverter without ENS	Code : 63642
DIN VDE 0126	
EN55011 1998-12, classe B ; EN61000-4-2 (1996-03) ; EN61000-4-4 (1996-03) ;	
EN61000-4-5 (1996-09) classeB ; EN 61000-4-6 (1994-03) ; EN 61000-4-8 (1995-05) ; EN605555 ; EN60950	

Warranty

Warranty	Standard 2 years (5 years optional)
----------	-------------------------------------

(*) *Contact us for sizing.*

(**) *MPPT : Maximum Power Point Tracking*

Product developed with the contribution of the R&D department of the French Energy Agency



28/02/2005

TOTAL ENERGIE

TOTAL ENERGIE

12-14 allée du levant 69890 LA TOUR DE SALVAGNY, France Tel. : +33 4 78 48 88 50 Fax : +33 4 78 19 44 83

www.total-energie.com